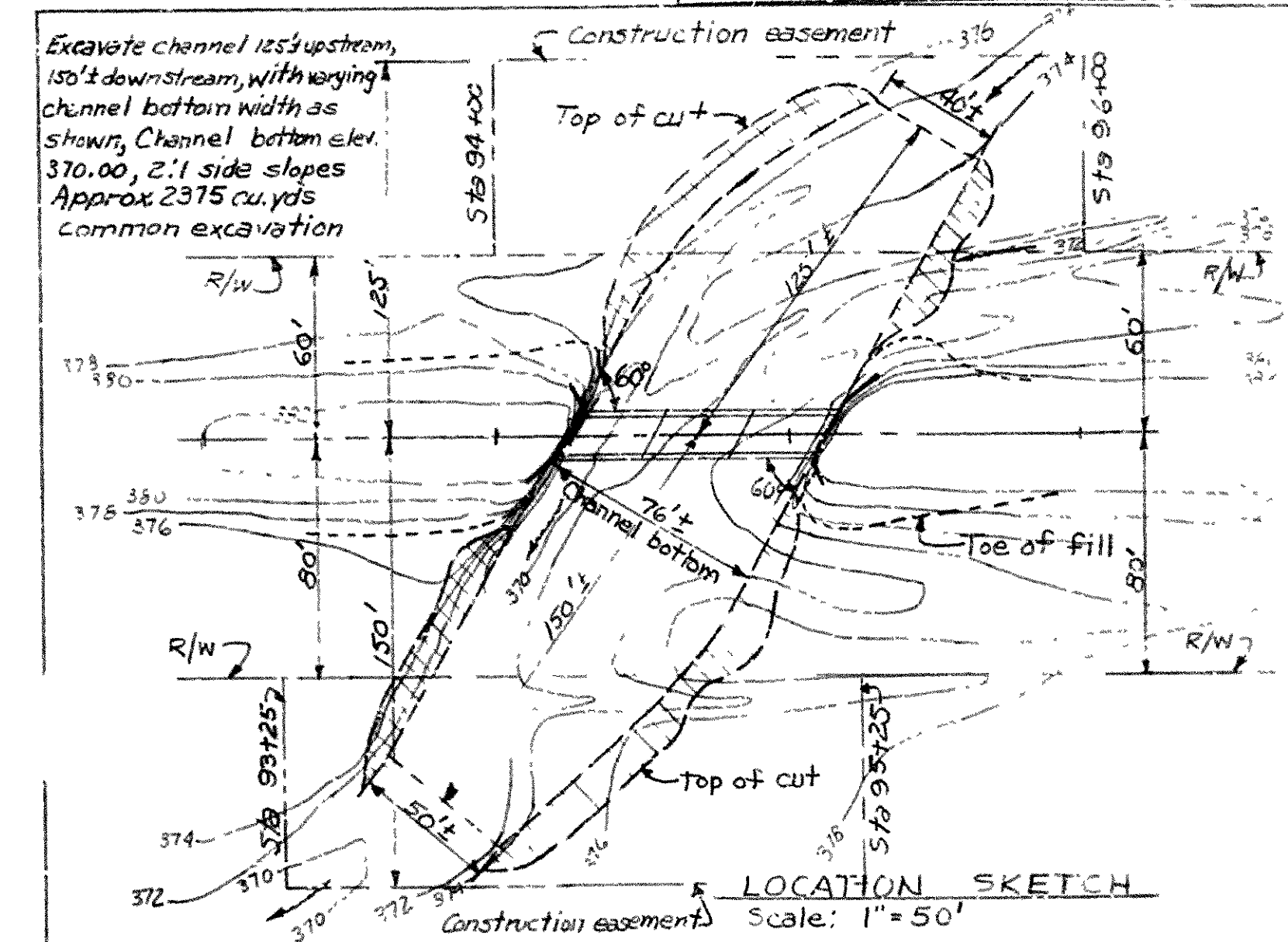
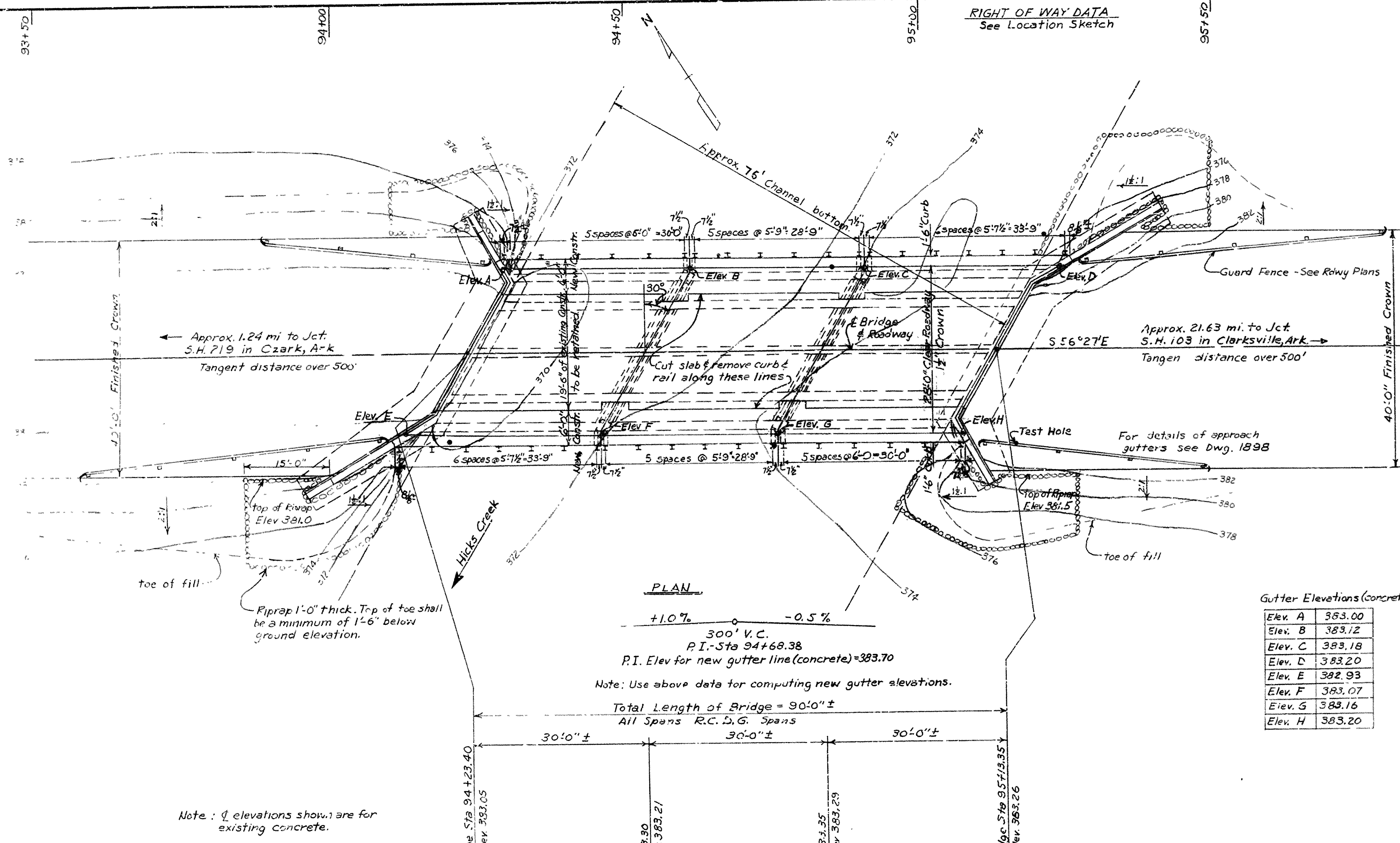


RIGHT OF WAY DATA
See Location Sketch

FED. ROAD No.	STATE	FED. AID PROJ. No.	FISCAL YEAR	SHEET No.	TOTAL SHEETS
6	ARK.	F-02-107		20	123
JOB No.				4474	20



GENERAL NOTES

B.M. Square chiseled on wheel guard 10' R.T.
Sta 94+18, Elev 383.58
For details of new superstructure see Dwg. 11435.
For details of new substructure see Lwg. 11434.

Loading: H20 A.A.S.H.O. 1957
Stresses: Class A Concrete (f_c=15) = 840 psi
Class S Concrete (f_c=10) = 1,200 psi
Reinforcing Steel = 20,000 psi

Specifications: Arkansas State Highway Commission
Standard Specifications for Highway Construction,
Edition of 1959.

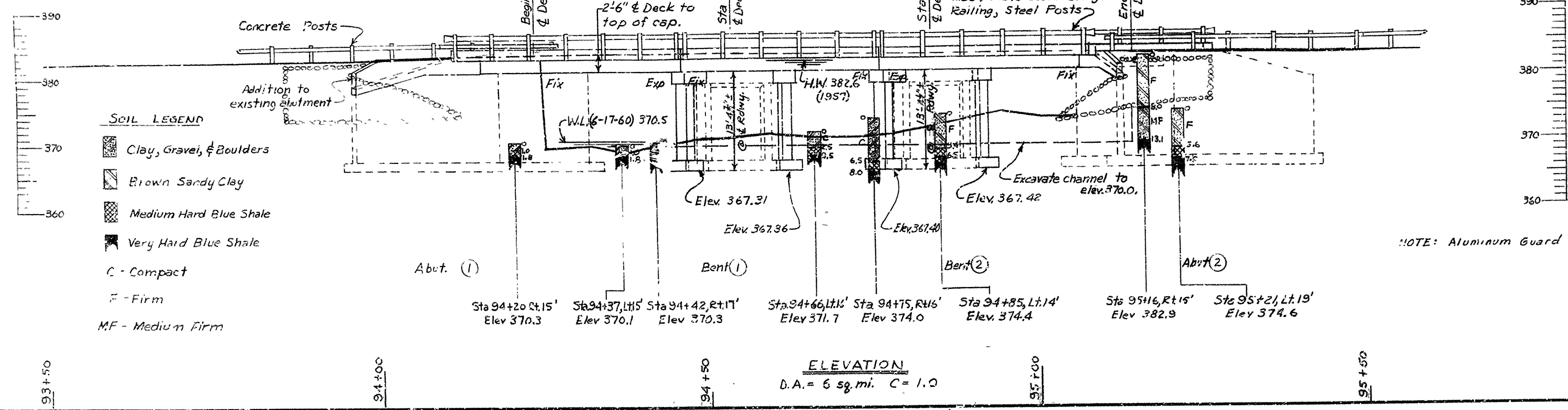
Excavation in rock shall be made to neat lines of footing. Care shall be exercised to avoid shattering rock faces by excessive blasting. Concrete in footings shall be poured against excavated surfaces of rock.

The Contractor shall make check measurements of existing bridge and make necessary adjustments to fit new work to existing construction. Material removed from the existing bridge is to be placed on the slopes at bridge ends as directed by the Engineer.

Details of existing construction are included for information only.

Gutter Elevations (Concrete)

Elev. A	383.00
Elev. B	383.12
Elev. C	383.18
Elev. D	383.20
Elev. E	382.93
Elev. F	383.07
Elev. G	383.16
Elev. H	383.20

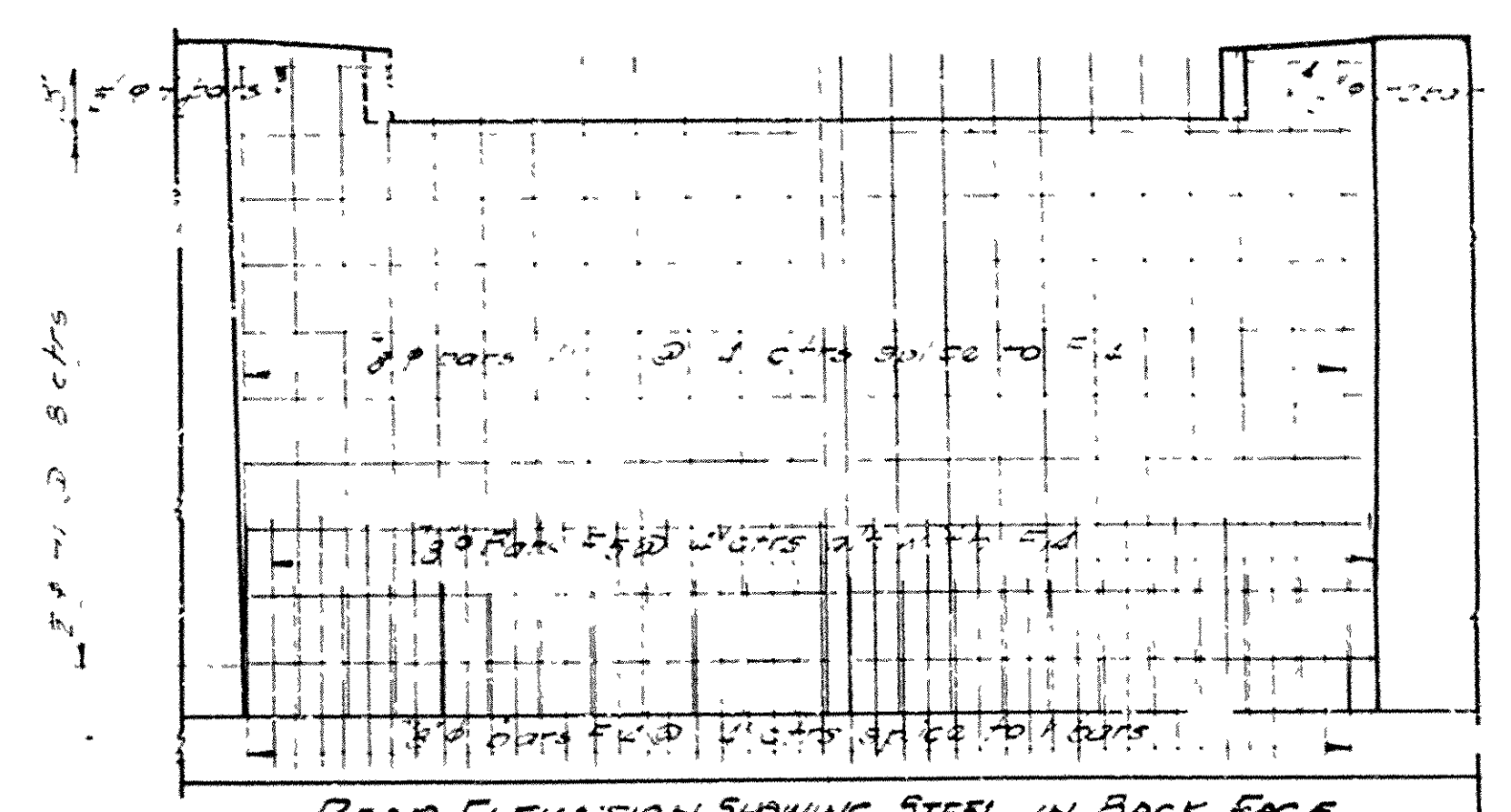


LAYOUT OF
BRIDGE OVER HICKS CREEK
OZARK - ALTUS RECONSTRUCTION
FRANKLIN COUNTY
ROUTE 64 SEC.3
ARKANSAS STATE HIGHWAY COMMISSION
LITTLE ROCK, ARK.

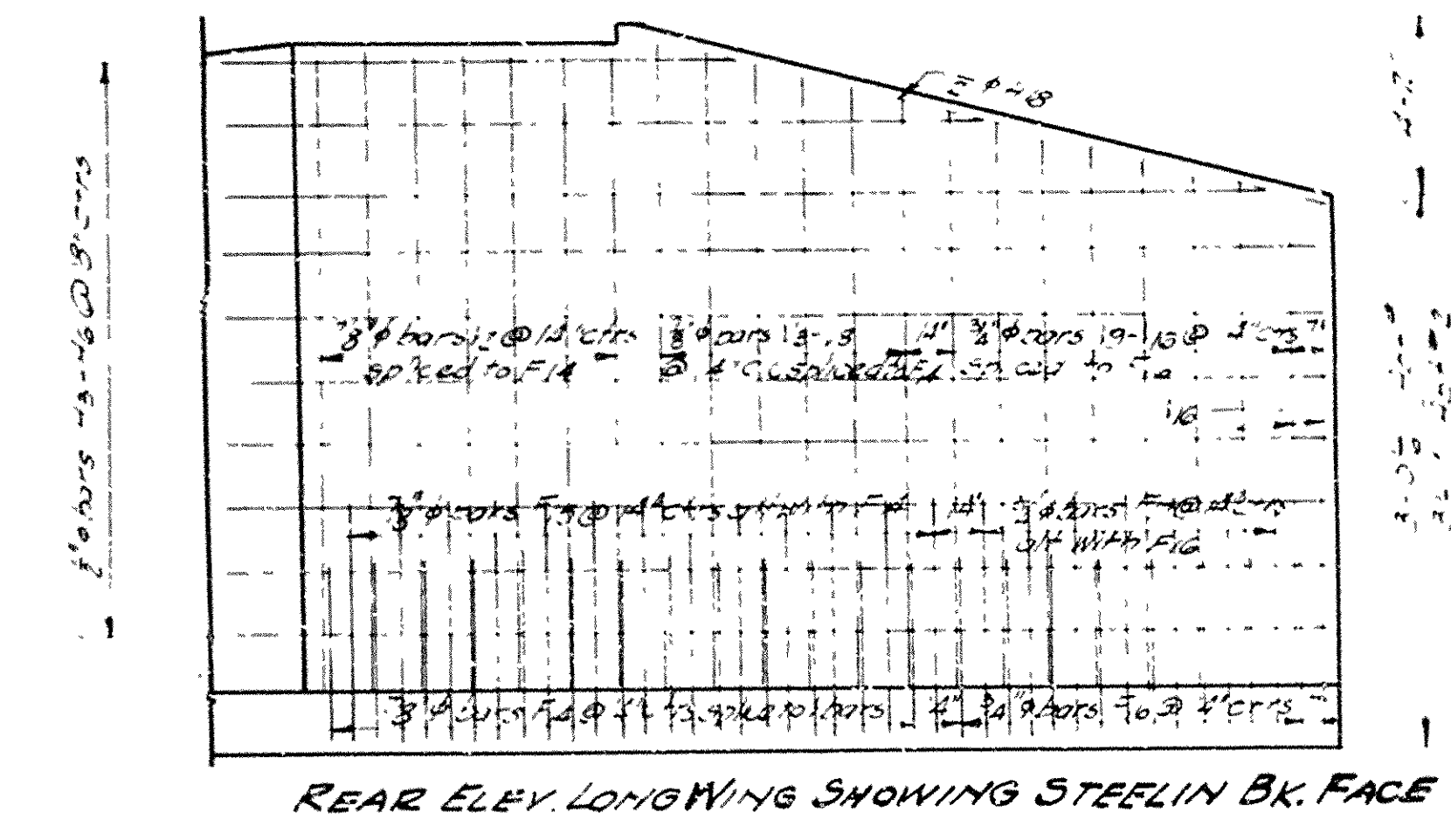
DRAWN BY: FMH DATE: 10-26-60
TRACED BY: DATE: SCALE: 1" = 10'-0"
CHECKED BY: C.E.K. DATE: 11-4-60

BRIDGE NO. 1647A DRAWING NO. 11426

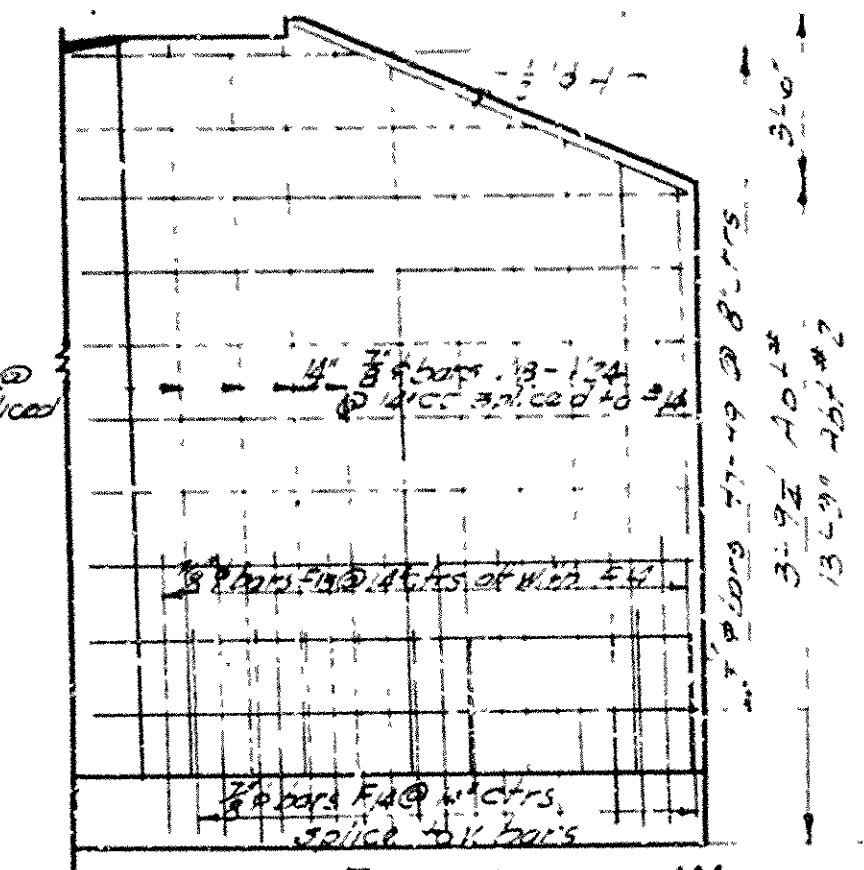
L.P. Carlson
BRIDGE DESIGN ENGINEER



REAR ELEVATION SHOWING STEEL IN BACK FACE



REAR ELEV. LONGWING SHOWING STEELIN BK. FACE

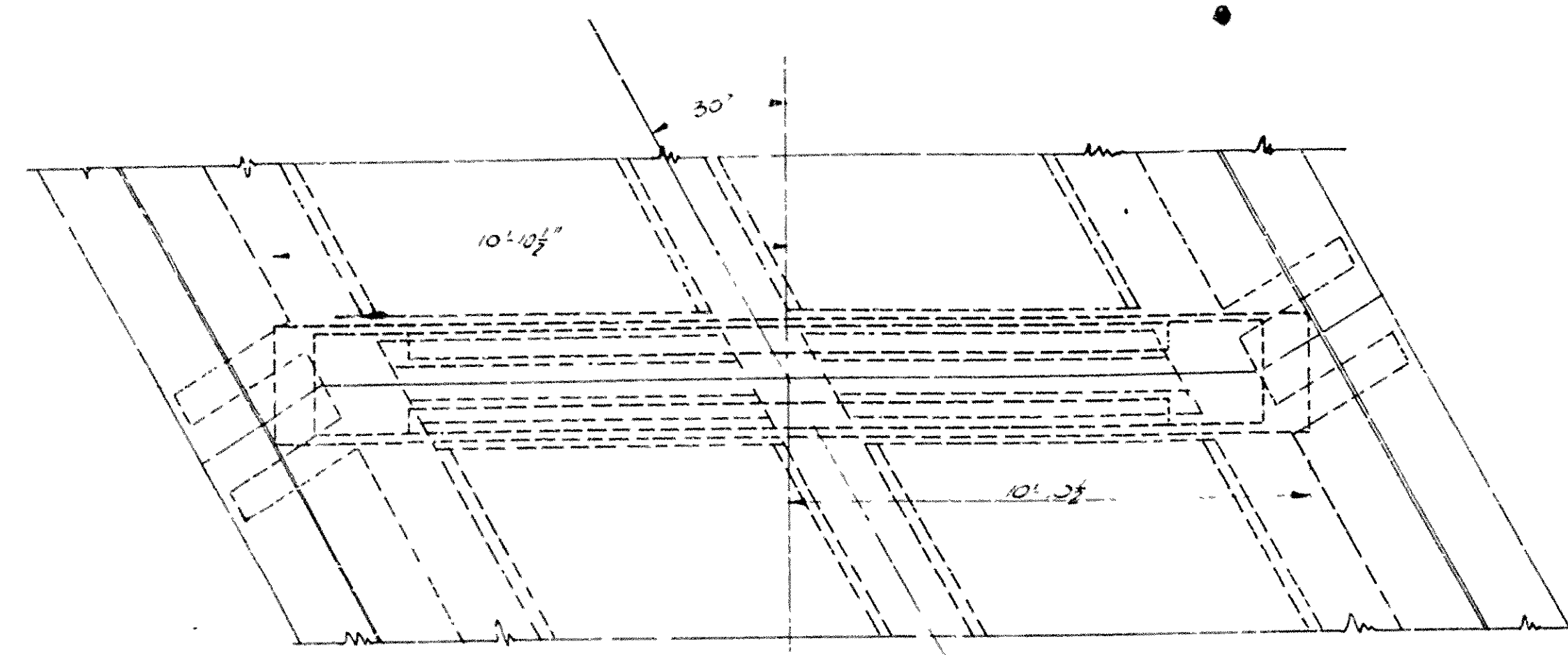


REAR ELEV. SHORT WING
SHOWING BK. FACE STEEL

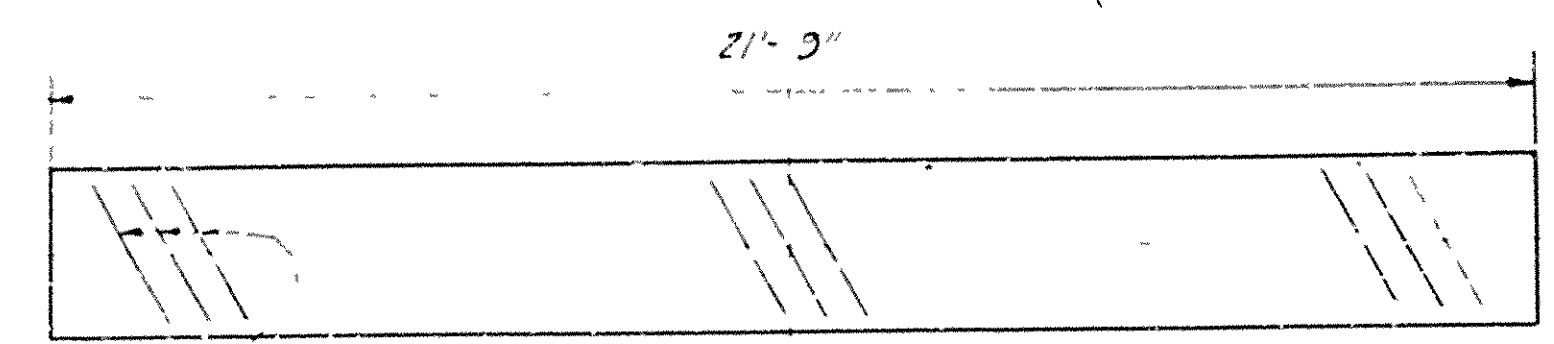
Mark	Size	Length	a	b	c
F1	2" Ø	32" 3"	28" 8"	2" 0"	2' 0"
F2	2" Ø	34" 6"	27" 5"	18" 0"	4' 6"
F4	1 7/8"	74" 0"	34" 0"	44" 2"	
F5	1 7/8"	74" 0"	34" 5"	5" 8"	
F10	2" Ø	64" 0"	24" 0"	3" 8"	
F17	2" Ø	84" 1"	2" 0"	5" 2"	
H3		26" 6"		2" 0"	
H4	3" Ø	25" 10"	23" 6"	2" 0"	
15	3" Ø	31" 0"	17" 5"	2" 0"	
16	1" 4"	17" 5"	10" 6"	2" 0"	
44	1 1/2"	26" 9"	24" 5"	2" 0"	
15	2" Ø	34" 6"	11" 6"	2" 0"	
47	2" Ø	34" 5"	14" 5"	2" 1"	
48		10" 6"	8" 6"	2" 0"	
49	2" Ø	74" 0"	5" 0"	2" 0"	
H16	1" Ø	54" 3"	7" 5"	3" 5"	
17	2" Ø	74" 0"	5" 1"	2" 0"	

ARKANSAS STATE HIGHWAY COMMISSION
LITTLE ROCK, ARK.
Drawn By: EAM Date: 1-20-31
Traced By: SLM Date: 1-20-31
Checked By: _____ Date: _____
Scale: $\frac{1}{2}$ in. = 10 ft. *except as noted*
BRIDGE NO. 1647 DRAWING NO. 3026

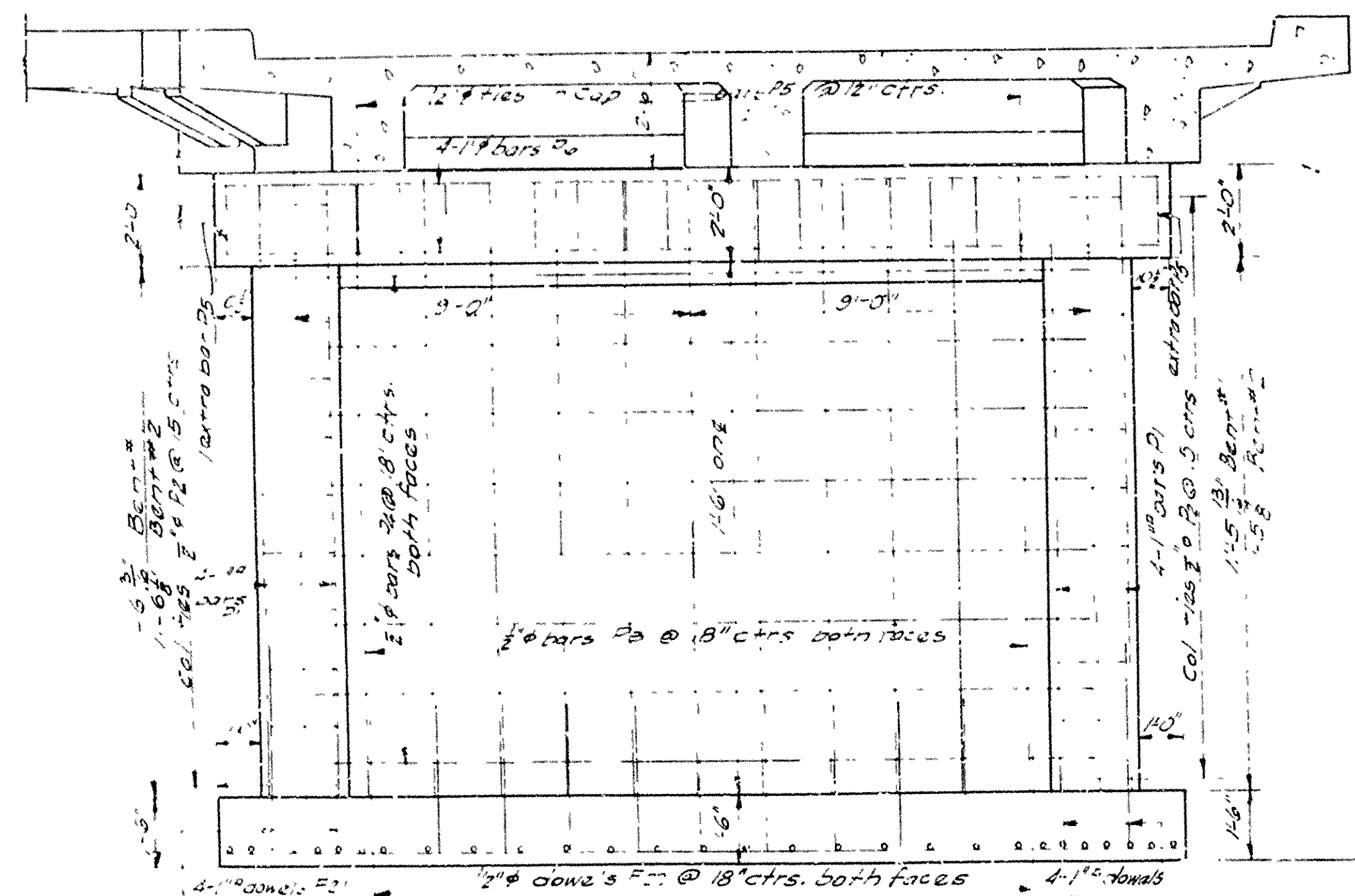
File at 302 1426 -



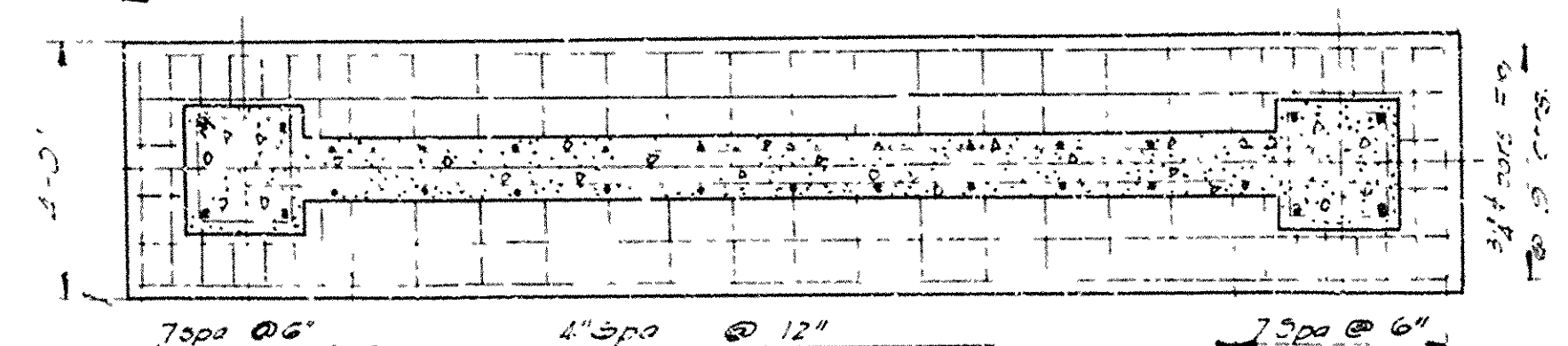
PLAN SUPERSTRUCTURE IN PLACE



PLAN OF CAP



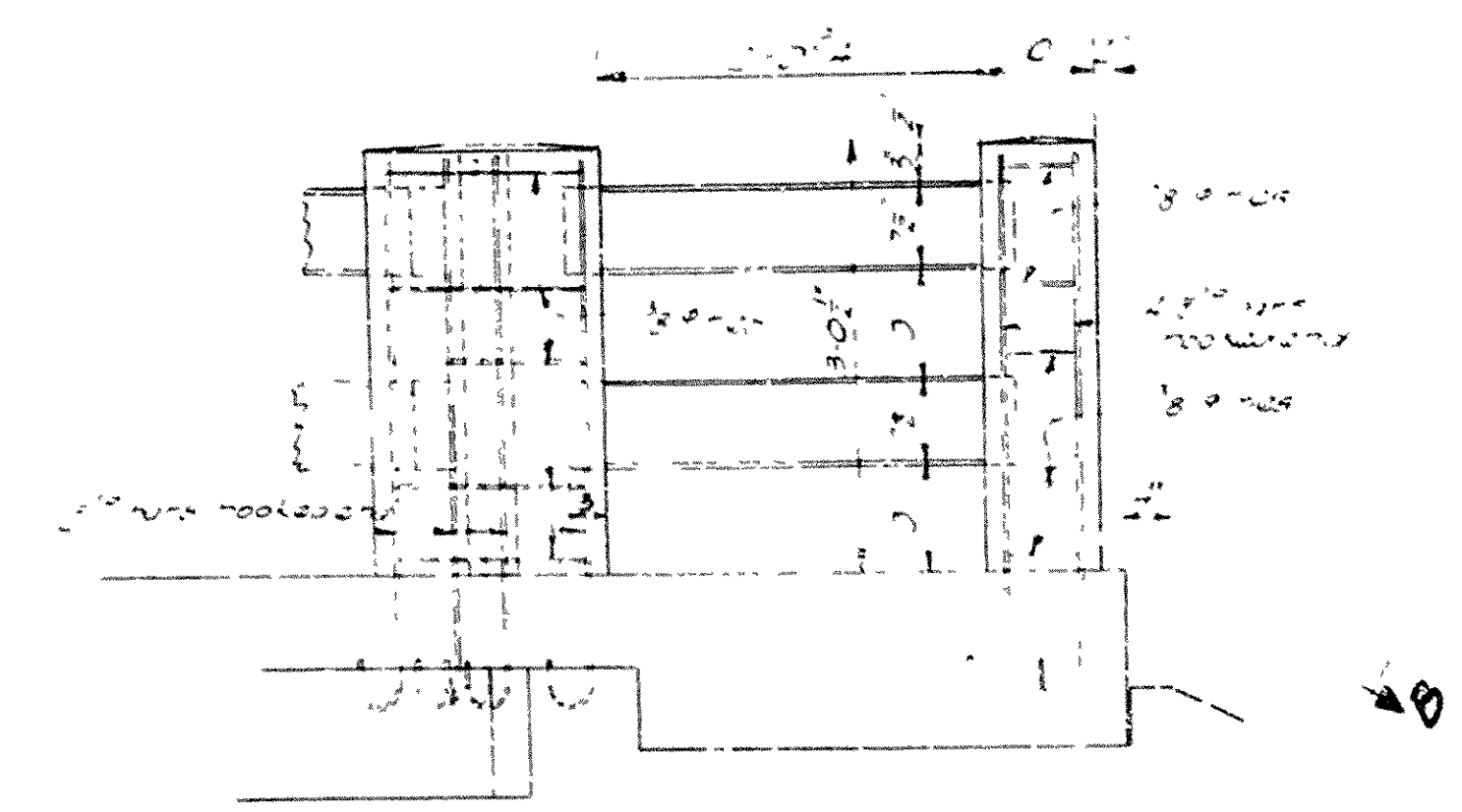
ELEVATION



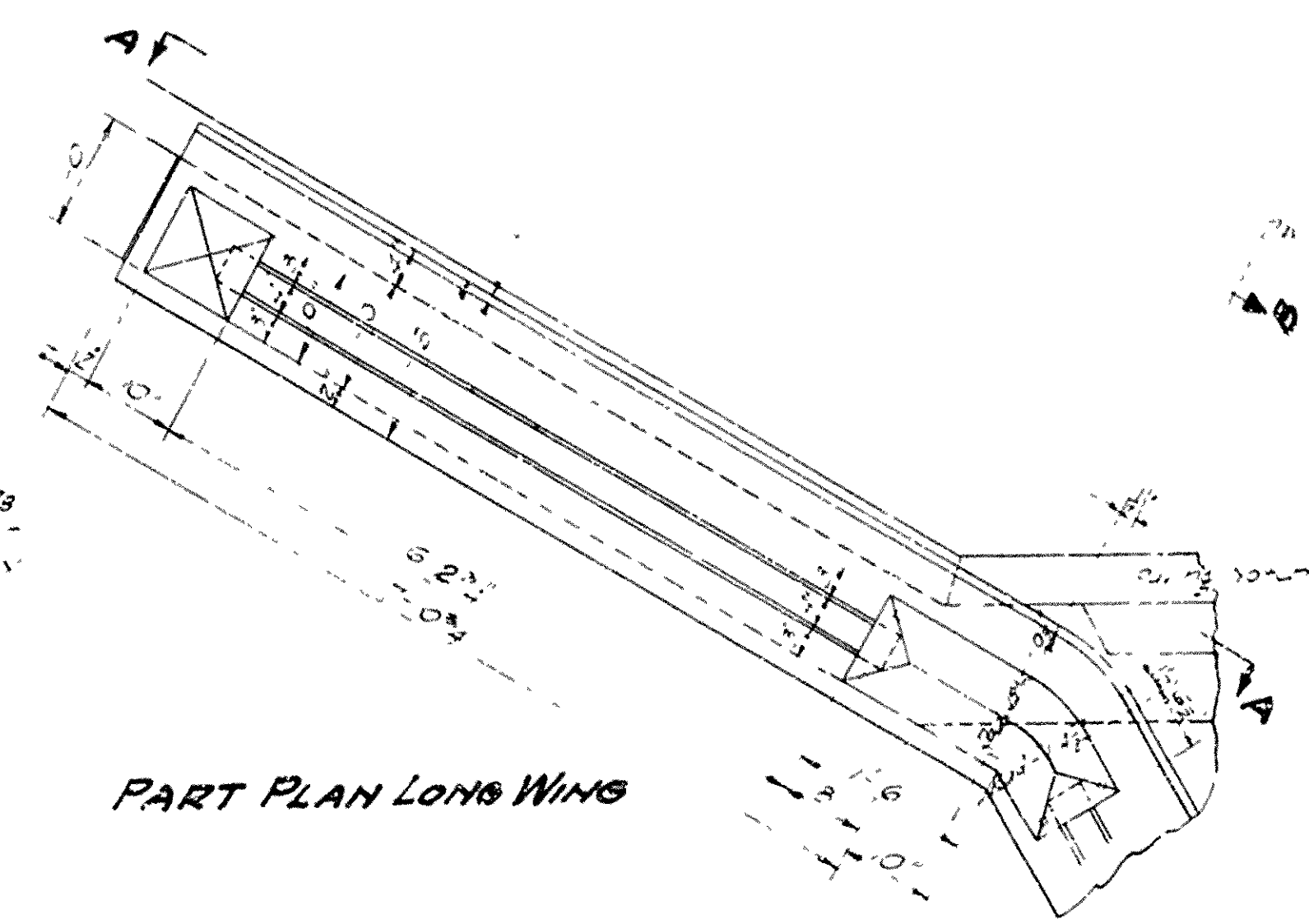
FOOTING PLAN

LIST OF BENT BARS

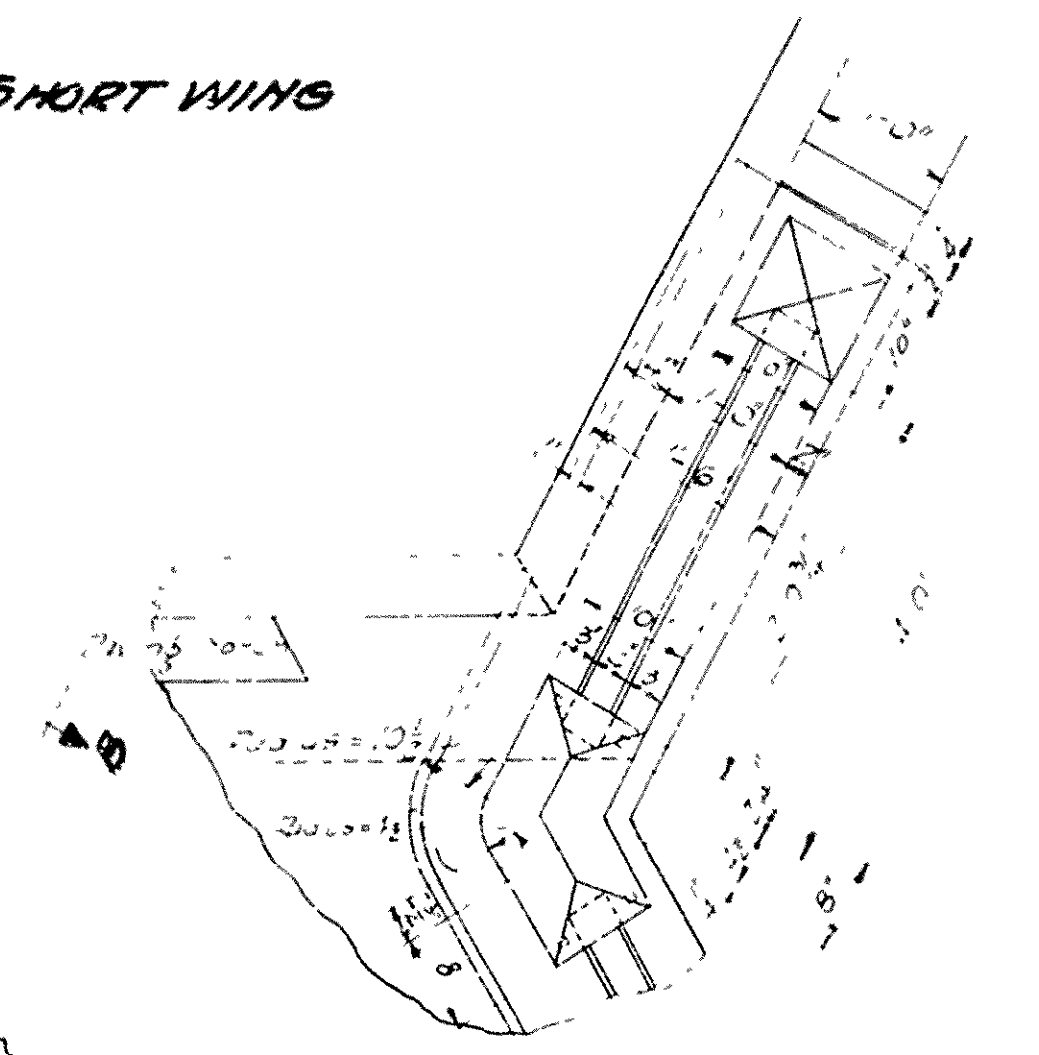
Bar No.	Size	Length	Qty	D	REMARKS
1	#4	5'-0"	1	8"	Top
2	#4	5'-0"	1	8"	Bottom
3	#4	5'-0"	1	8"	Top
4	#4	5'-0"	1	8"	Bottom
5	#4	5'-0"	1	8"	Top
6	#4	5'-0"	1	8"	Bottom
7	#4	5'-0"	1	8"	Top
8	#4	5'-0"	1	8"	Bottom



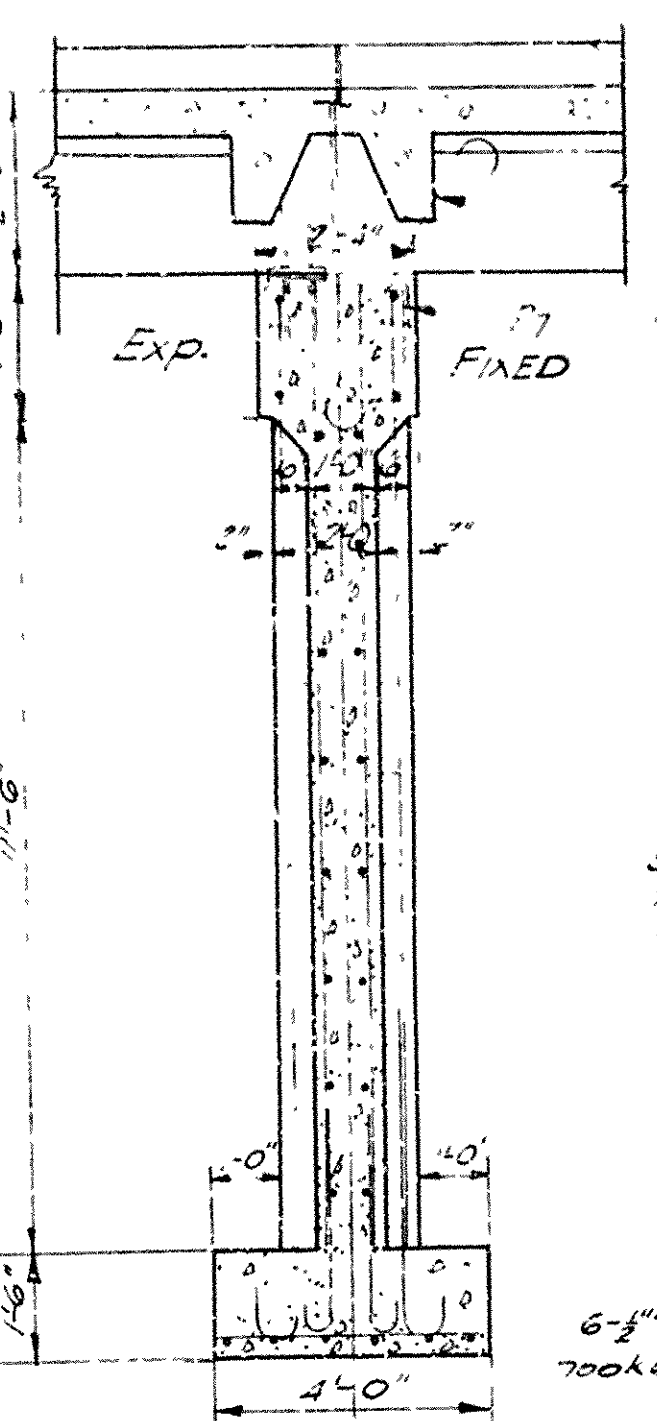
ELEVATION B-B SHORT WING



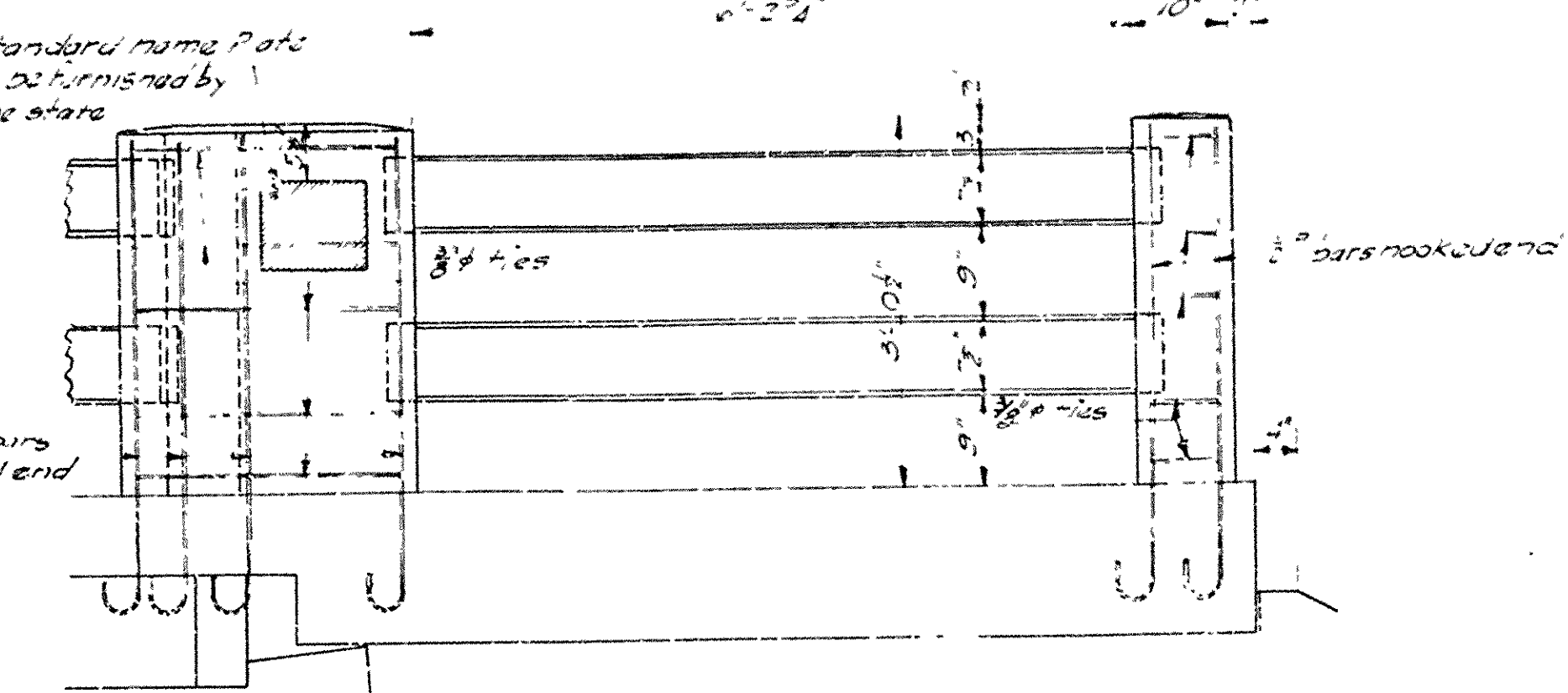
PART PLAN LONG WING



PART PLAN SHORT WING



SECTION ON E



ELEVATION A-A LONG WING

DETAILS OF TURNOUTS

Scale: 3/4" = 1'-0"

DETAILS OF
BENTS AND TURNOUTS
BRIDGE OVER HICKS CREEK
FRANKLIN COUNTY

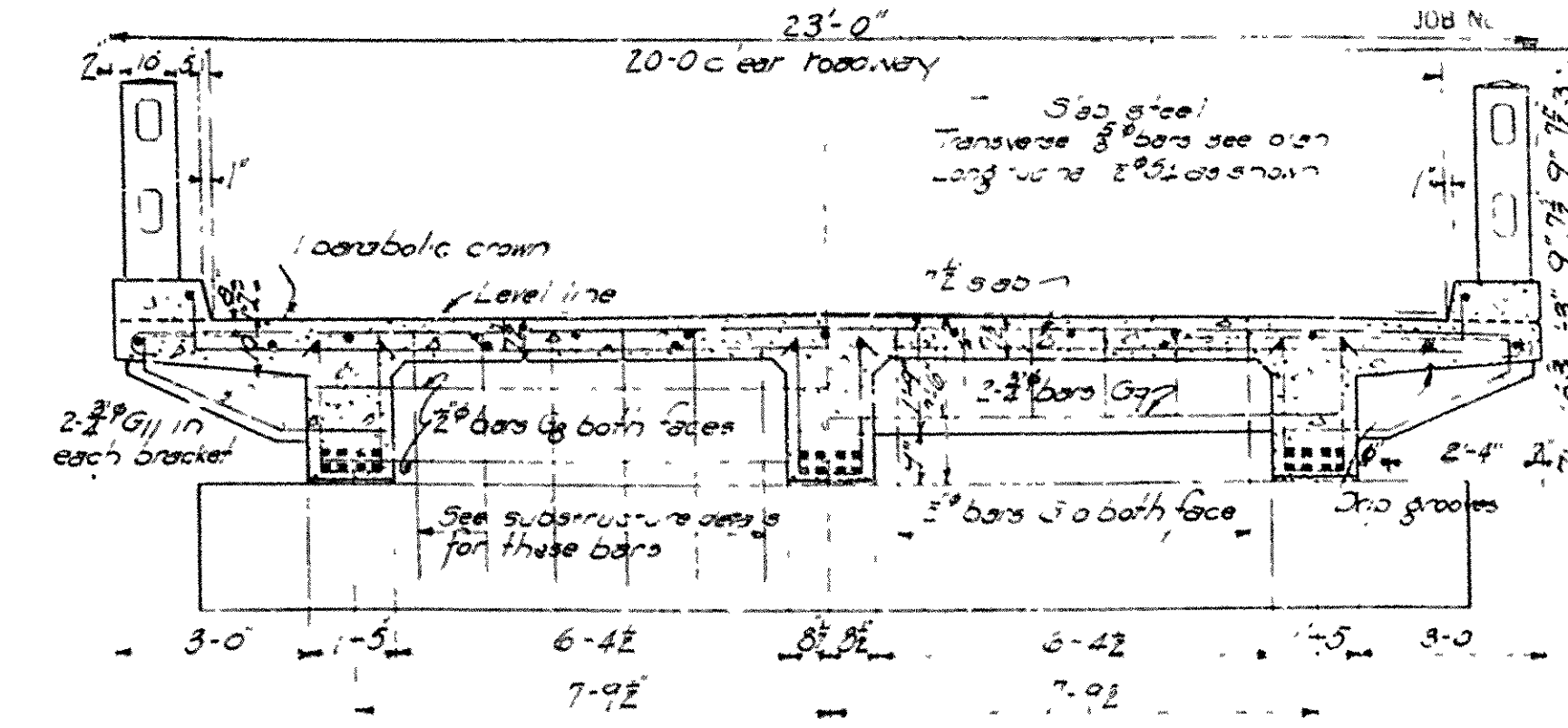
ROUTE 64 SEC. 3

ARKANSAS STATE HIGHWAY COMMISSION
LITTLE ROCK, ARK.

Drawn By: FAH Date: 1-20-31
Traced By: AMM Date: 1-2-31
Checked By: _____ Date: _____
BRIDGE NO. 1647 DRAWING NO. 3027

BRIDGE ENGINEER

File as LWS 1422 R



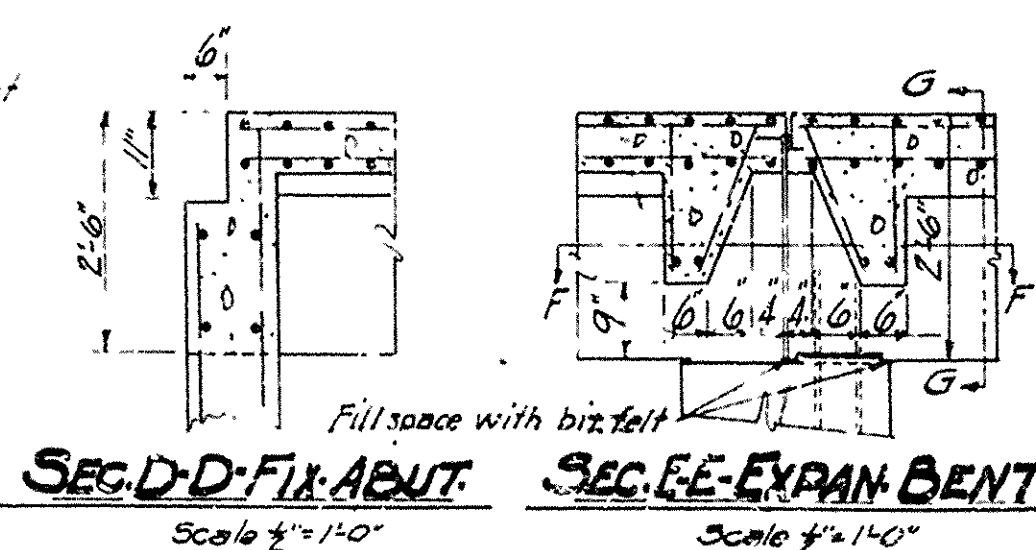
LONGITUDINAL SECTION
Scale $\frac{3}{8} = 1' 0$

HALF SECTION A-A

HALF SECTION B-B



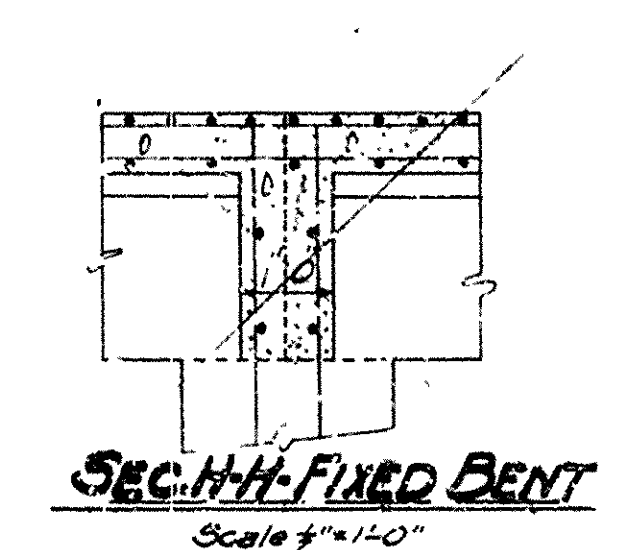
PLAN



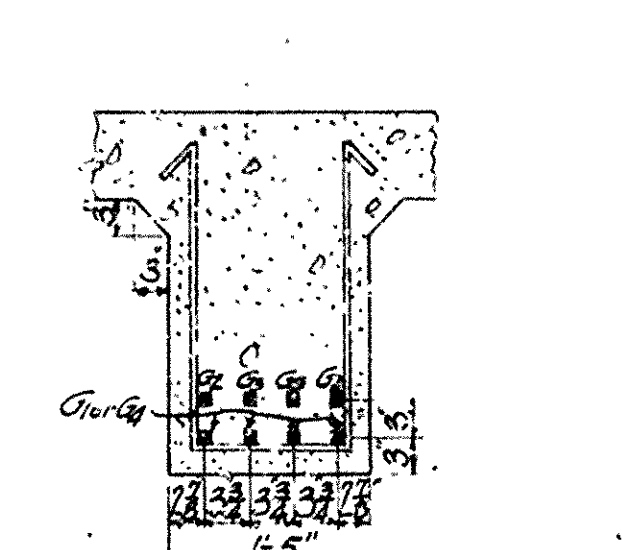
RAIL SECTION
Scale $1\frac{1}{2}"=1'-0"$

SEG. D-D-FIX. ABUT.
Scale $\frac{1}{4}" = 1'-0"$

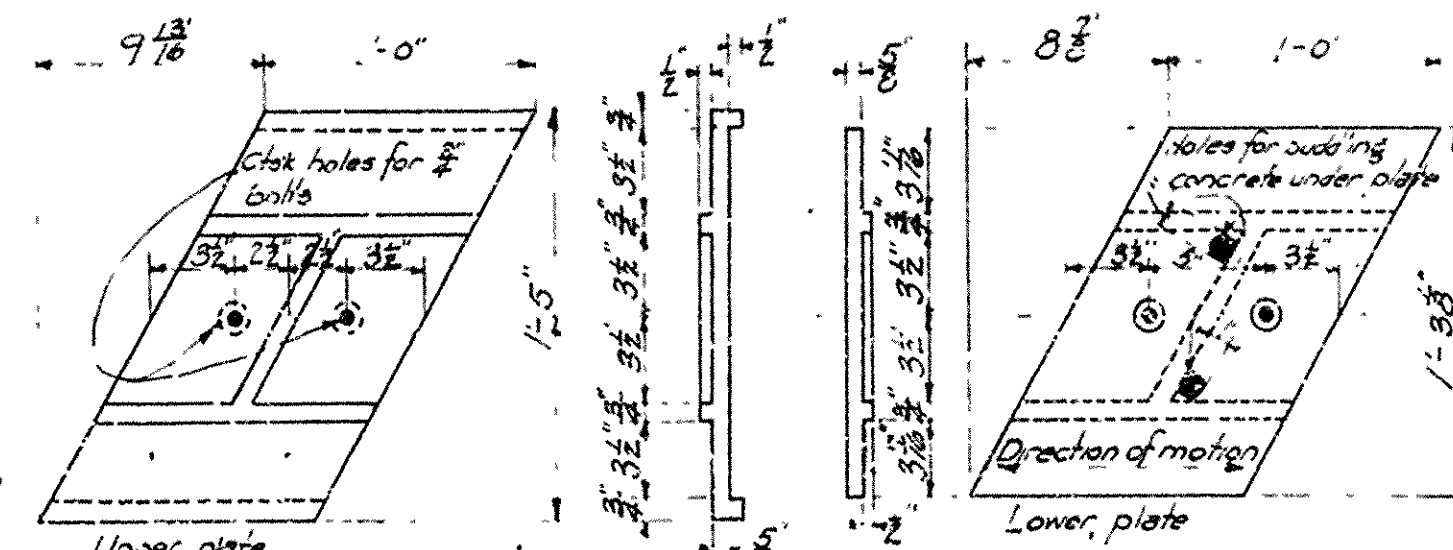
SEC. E-E-EXPAN. BENT
Scale 1/2" = 1'-0"



SEC-H-H-FIXED BENT
Scale 1/4"=1'-0"



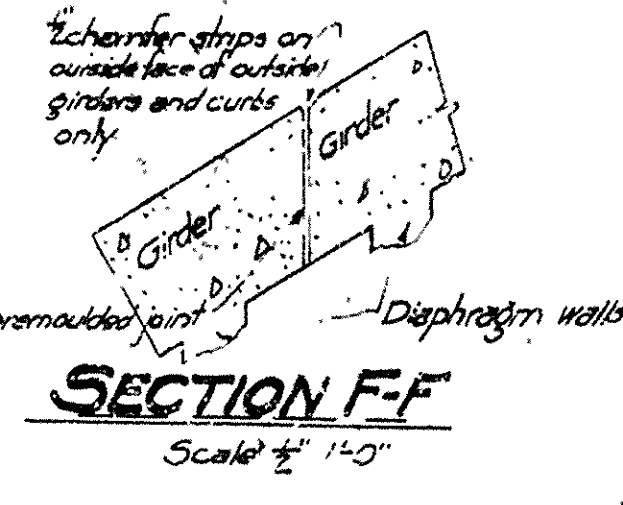
DETAIL OF STEEL IN GIRDER
AT MIDSPAN
Scale 3/4"=1'-0"



DETAIL OF BRONZE EXPANSION PLATES
Scale 1/2"=1'-0"

GENERAL NOTES

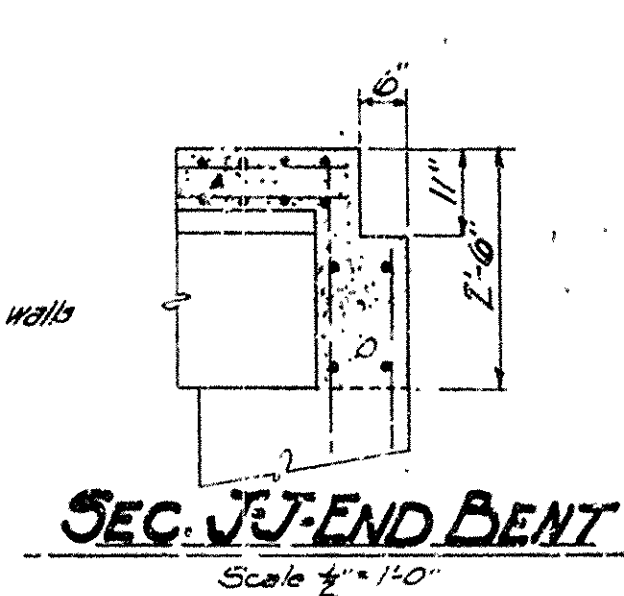
All exposed corners to have 2" chamfer unless otherwise noted.
Precast concrete handrails to be 112mm Maximum aggregate.
All concrete above top of bent caps, except handrails, to be Class 3.
Reinforcing steel to be deformed bars of structural or intermediate grade.
"n" and bending diagrams must be submitted and approved before construction is begun.
Roadway drains and expansion devices to be paid for at unit price bid for reinforcing steel.
Specifications: Arkansas Standard Road and Bridge Specifications adopted May 30, 1925 and revised. See title sheet.
Unit measures: fs, 16000 psi; fcs, 7500 psi; n, 15.
All dimensions shown are center to center of bars.



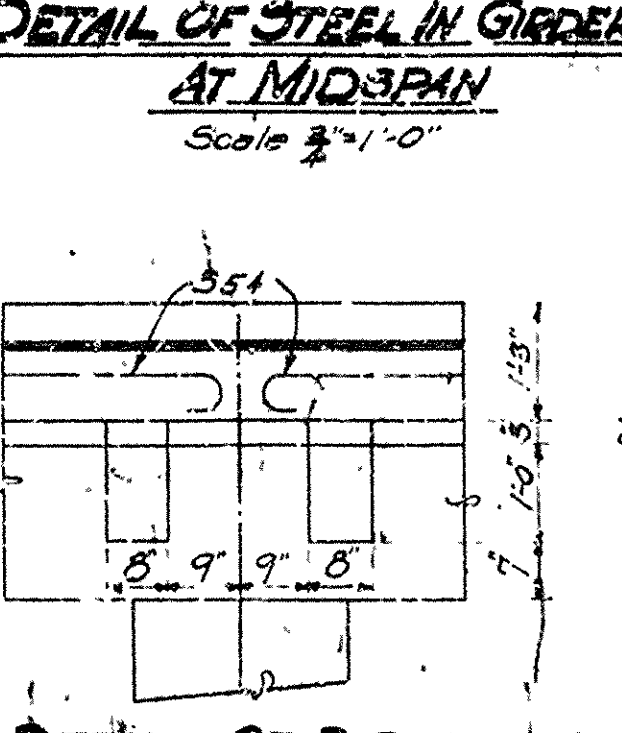
DETAIL OF EXPANSION JOINT FOR RAIL MEMBERS

SECTION G-G
Scale 2"=1'-0"

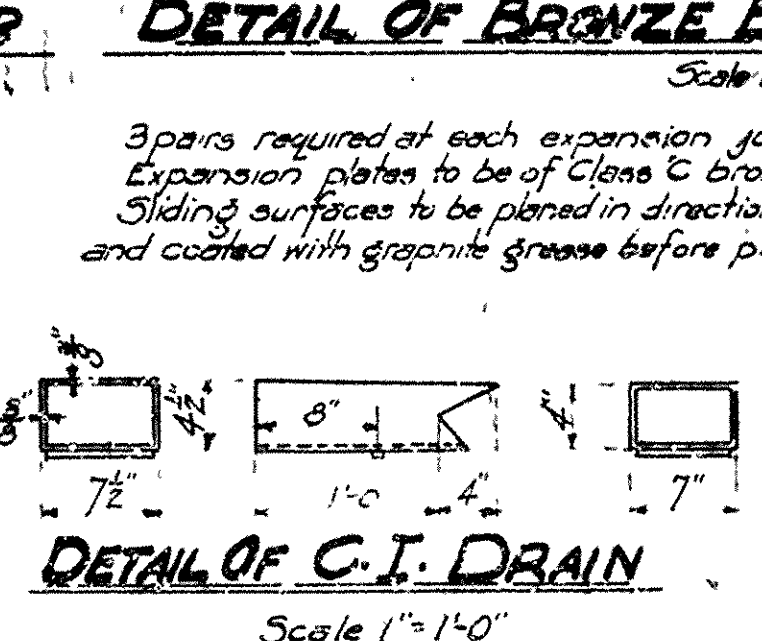
SECTION F-F
Scale 1/2" = 1'-0"



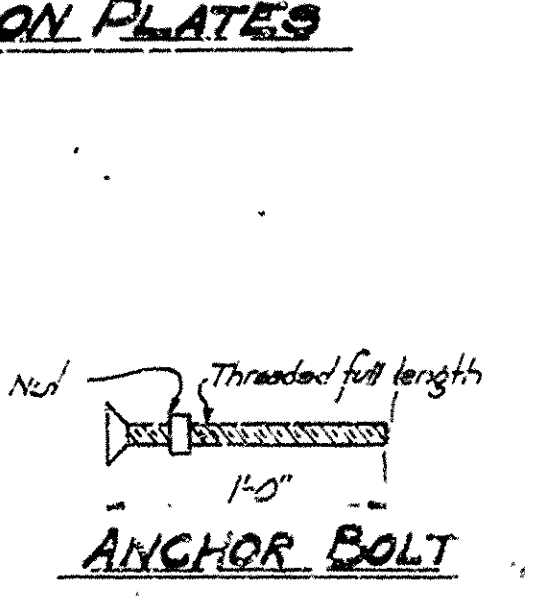
SEC. J-J- END BENT
Scale $\frac{1}{2}" = 1'-0"$



DETAIL OF BRACKET
Scale 1/8" = 1'-0"



DETAIL OF C.I. DRAIN
Scale 1"=1'-0"



ANCHOR BOLT

DETAILS OF
STANDARD 30'0" R.C.D. GIRDER
20'0" ROADWAY - 30° SKEW RIGHT
3 GIRDER TYPE

ARKANSAS STATE HIGHWAY COMMISSION
LITTLE ROCK, ARK.

Drawn By: Date: Scale: in. = 1 ft.
 Traced By: Date: 1-20-31
 Checked By: Date:
BRIDGE NO. DRAWING NO. 2276

File # 5 DWG 1426